



## SEND Newsletter (2)

*Spring 2025*



### Message from the SENCO

Welcome to the second edition of the SEND newsletter! This newsletter includes SEND headlines for the Spring Term, information regarding the optional SEND meetings, the Dudley local offer, links which offer support and local leisure sessions, which may benefit your child, and links to informative SEND documents.

Our children with SEND continue to thrive in school and access our knowledge-rich curriculum. Our classrooms continue to be inclusive with visual timetables and adaptive teaching.

*Miss Rose*



### Important dates:

#### Parents' Consultation Evenings:

Tuesday 25 March: 3.45pm - 7.15pm

Wednesday 26 March: 3.45pm - 7.15pm

#### Extra optional SEND Parent Consultations:

Monday 31 March: 3:30pm - 4.00pm

Tuesday 1 April: 3.30pm - 4.00pm

Thursday 3 April: 3.30pm - 4.00pm

Online booking form will be sent to you in Spring 2.

### Optional SEND Parent Consultations

In Autumn Term we offered an optional meeting (additional to the Parents' Consultation meeting) to discuss your child's Learning Support Plan (LSP), including progress towards targets and any provisions/support in place.

Last term, we had a number of parents attend and the feedback was extremely positive. Many parents commented on how it was beneficial to have an additional meeting, as the Parent Consultation meetings focus on academic progress and personal development, therefore this meeting allowed in-depth discussions on their child's needs and support.

Due to the success and positive feedback for the additional SEND meetings, we will continue to offer these for Spring Term (see dates on the left).

During the meeting, you will discuss your child's evaluated LSP from January 25 - March 25, as well as their new LSP for this term. Any external agency support will also be discussed.

Dudley offer a wide range of services and support for children and young people (aged 0 - 25 years) with SEND needs.

All of which can be found on the Dudley Local Offer website: <https://www.dudley.gov.uk/resident/localoffer>



To contact Miss Rose (SENCO), please email or call the school office:

[admin@alder.dudley.sch.uk](mailto:admin@alder.dudley.sch.uk)  
School Office: 01384 816610

## Support for parents:

*We want to ensure you have access to information which can support you in supporting your child inside and outside of school.*

### **TINY HAPPY PEOPLE**

Tiny Happy People is a website full of articles and resources to support a variety of different SEND needs.

([www.bbc.co.uk/tiny-happy-people](http://www.bbc.co.uk/tiny-happy-people))

### DUDLEY SENDIASS

Dudley SENDIASS offer free support and advice to parents and carers of children and young people with SEND.

<https://www.dudley.gov.uk/residents/learning-and->

### **We Carers**

We love Carers is local charity organisation run by carers for carers.

They have a variety of services to support carers, and offer advice and support.

([www.welovecarers.org](http://www.welovecarers.org))

## SEND Spring 2025 Headlines

- ◆ Relax Kids is running across KS1 and KS2 - children for this intervention are selected by relevant staff and in collaboration with parents. There are some strategies and support you can use from Relax Kids at home: <https://relaxkids.com/for-parents/>



- ◆ We have purchased and started to use Literacy Gold Dyslexia Screener. This is a tool we are using as an early stage of the assess, plan, do, review process for cognition and learning concerns. If you have any concerns regarding your child's learning needs, please speak to your child's class teacher.

**Literacy Gold**

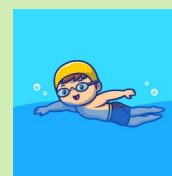
## Local Leisure Centres

As the Easter holidays approach, you may be looking for swimming and soft play sessions, which are appropriate for your child. These environments can be fun but also very daunting for a child with SEND needs, but they should not miss out!

Below are links to websites which outline any soft play or leisure centres, which offer SEND sessions:

<https://dudleyci.co.uk/categories/sen-leisure-sessions>

<https://www.dbleisure.co.uk/school-holiday-activities>



## Links to important documents:

**Alder Coppice SEND Policy:** [www.alder.dudley.sch.uk/learning-support-special-educational-needs/](http://www.alder.dudley.sch.uk/learning-support-special-educational-needs/)

**School SEN Information Report:** [www.alder.dudley.sch.uk/learning-support-special-educational-needs/](http://www.alder.dudley.sch.uk/learning-support-special-educational-needs/)

**The SEND Code of Practice 2015:** [www.gov.uk/government/publications/send-code-of-practice-0-to-25](http://www.gov.uk/government/publications/send-code-of-practice-0-to-25)