

Alder Coppice Primary School Knowledge Organiser

Subject : Science

Year: 4

Unit: Digestion/Teeth System

Links to: Nutrition and Healthy Eating

What I Should Already Know:

- The parts of the human body and what they do
- All animals need food, air and water to survive.
- Different ways that humans can keep healthy
- Animals get nutrition from what they eat
- Humans and some animals have muscles and skeletons for support, movement and protection
- What carnivores, herbivores and omnivores are
- That there are life processes that all things do

Subject Vocabulary:

Fair test— A test which controls all but one variable when trying to answer a Scientific question

Variable— Anything that can be changed

Constant— The part that doesn't change in the Experiment



Skills & Enquiry:

- Investigate the parts of the digestive system and where they are in the body
- Explore teeth in humans and other animals
- Carry out a Scientific Investigation to find out about the effects of different drinks on teeth.



What I should know by the end of the Unit:

- What the digestive system is
- The names of parts of the digestive system and what each does
- The location of parts of the digestive system in the human body
- The names and functions of different teeth in humans
- The effects of different drinks on teeth
- How to carry out a fair test
- The teeth of different animals and what this tells us

Unit Specific Vocabulary:

absorb - soak up or take in

anus – the ring of muscle which works to excrete waste from the rectum

canine - pointed teeth near the front of the mouth of humans and of some animals

carnivore - an animal that eats meat

decay - gradually destroyed by a natural process

digestion - breaking down ingested food

enamel - the hard white substance that forms the outer part of a tooth

excretion - the process of eliminating faeces, urine, or sweat from the body

faeces - the solid waste substance that people and animals get rid of from their body by passing it through the anus

herbivore - an animal that only eats plants

incisor - the teeth at the front of your mouth which you use for biting into food

intestines - the tubes in your body through which food passes when it has left your stomach

molar - the large, flat teeth towards the back of your mouth that you use for chewing food

muscles - something inside your body which connects two bones and which you use when you make a movement

nutrition - the process of taking food into the body and absorbing the nutrients in those foods

oesophagus - the part of your body that carries the food from the throat to the stomach

omnivore - person or animal eats all kinds of food, including both meat and plants

organ - a part of your body that has a particular purpose

plaque - a substance containing bacteria that forms on the surface of your teeth

premolar - two situated on each side of both jaws between the first molar and the canine

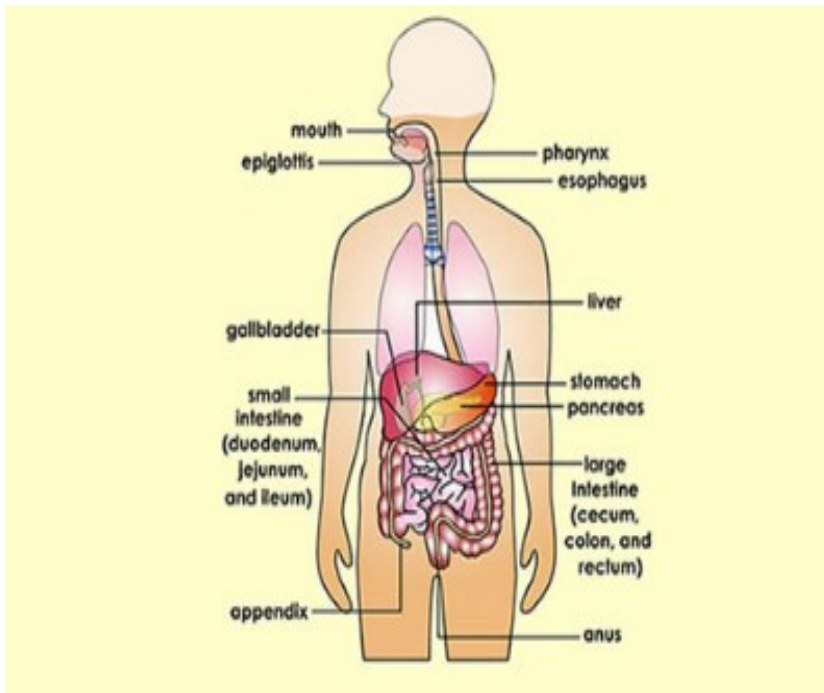
process - a series of actions used to produce something or reach a goal.

saliva - the watery liquid that forms in your mouth and helps you to chew and digest food

stomach - the organ inside your body where food is digested before it moves into the intestines

system – a set of things working together

Key Facts



The **key parts** of the human digestive system are:

- The **mouth** where food is first broken down by the teeth.
- The **oesophagus** which takes food into the stomach.
- The **stomach** which uses gastric juices to break down food further.
- The **small intestine** which absorbs water and nutrients into the bloodstream.
- The **large intestine** which absorbs all water
- The **rectum** where stools (poo) is stored
- The **anus**, where stools are released.

Children have **20 primary** or **milk teeth**.

They lose these by around the age of 13.

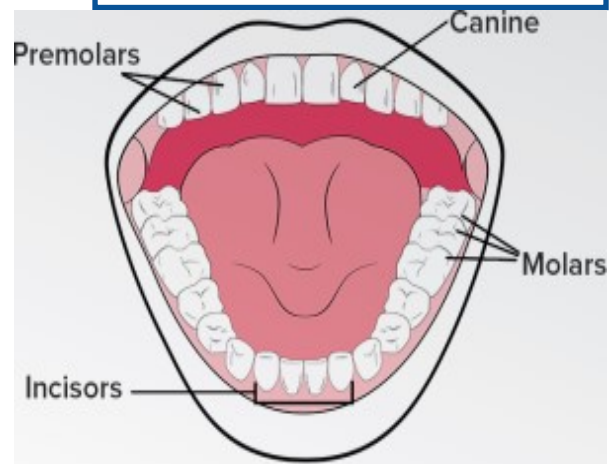
Adults have **32 permanent** teeth.

Incisors— the flat front teeth cut food into small pieces like scissors

Canines—sharp pointy teeth which tear food

Pre-molars— larger and flatter teeth which grind up food

Molars—large, flat teeth with sharp ridges for crushing and grinding



The Anatomy of a Tooth

