



SEND Newsletter



Welcome to the Alder Coppice SEND Newsletter

Message from the SENCO

Welcome to the SEND newsletter! This newsletter includes SEND updates regarding homework for your child and support in school, the Dudley Local Offer, links which offer support and local leisure sessions, which may benefit your child, and links to informative SEND documents.

Our children have settled back into school routines and interventions have now begun. We continue to make learning and environment accessible to all.

Miss Rose



Homework

As you will know from the Diary Dates and the letter sent out Homework re-starts this term. Our School Website has the new Homework Policy for this academic year. Children will now be given their spelling test results to take home. We continue to ensure we facilitate a fully inclusive learning environment, which means spelling for you child with SEND may be adapted to meet their needs. If your child has a specific spelling target, their weekly spellings will be those spellings. Their class teacher will decide how many spellings your child will be given to practise, based upon what is best for your child. By catering to your child's needs in this way, we are enabling them to continue to make their own progress, within the areas they need support with.

Important dates:

Parent Consultation Day:

Friday 29 November

Extra optional SEND Parent Consultations:

This year we are offering additional optional parent consultations to discuss your child's Learning Support Plan (LSP). Details of how to book will follow.

Monday 2 December: 3.30pm - 4pm

Tuesday 3 December: 3.30pm - 4pm

Thursday 5 December: 3.30pm - 4pm



Dudley offer a wide range of services and support for children and young people (aged 0 - 25 years) with SEND needs. All of which can be found on the Dudley Local Offer website:



To contact Miss Rose (SENCO), please email or call the School office:

admin@alder.dudley.sch.uk
School Office: 01384 816610

Support for parents:

We want to ensure you have access to information which can support you in supporting your child inside and outside of school.

TINY HAPPY PEOPLE

Tiny Happy People is a website full of articles and resources to support a variety of different SEND needs.

(www.bbc.co.uk/tiny-happy-people)

DUDLEY SENDIASS

Dudley SENDIASS offer free support and advice to parents and carers of children and young people with SEND.

<https://www.dudley.gov.uk/residents/learning-and-school/information-for-parents/dudley-sendiass/>

We Carers

We love Carers is local charity organisation run by carers for carers.

They have a variety of services to support carers, and offer advice and support.

(www.welovecarers.org)

Making our classrooms inclusive

We continue to provide reasonable adjustments for our children with SEND and create an environment suitable for all children's needs.

Last year we trialled the use of visual timetables in every classroom. The response from our children has been really positive and we continue to use this provision to make our classrooms accessible for all:



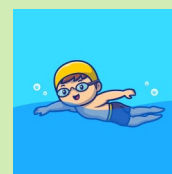
Local Leisure Centres

It can be tricky to find swimming and soft play sessions which are appropriate for your child. These environments can be fun but also very daunting for a child with SEND needs, but they should not miss out!

Dudley Community Information Directory webpage displays locations, dates and times of SEND-friendly swimming and soft play sessions.

On this webpage, you can specify types of need, cost and location.

<https://dudleyci.co.uk/categories/sen-leisure-sessions>



Links to Important Documents:

Alder Coppice SEND Policy: www.alder.dudley.sch.uk/learning-support-special-educational-needs/

School SEN Information Report: www.alder.dudley.sch.uk/learning-support-special-educational-needs/

The SEND Code of Practice 2015: www.gov.uk/government/publications/send-code-of-practice-0-to-25